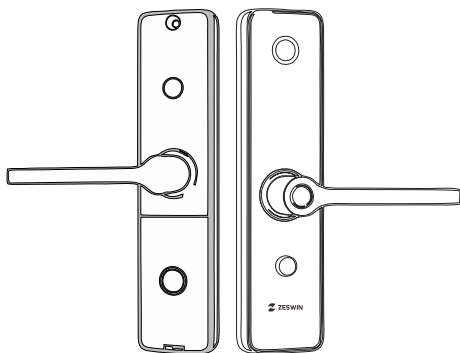


Smart Lock Core - Instructions Manual



PLEASE KEEP THIS GUIDE

This guide contains important information about your lock.

1.

Safety and Precautions

1. Read all instructions in their entirety to ensure that you have a complete understanding of the lock's features, installation requirements, and operation procedures.
2. We highly recommend seeking the assistance of a professional installer to ensure proper installation.
3. Before installation, please ensure that the lock and lock body are selected correctly according to the door opening direction. Failure to do so may result in improper function or damage to the lock.
4. Familiarize yourself with all warning and caution statements provided in this manual, as they are designed to protect you and others from harm or injury.
5. It is important to remind all family members of the safety precautions associated with using the lock, including keeping access to the back panel restricted and regularly checking the lock's settings to ensure they have not been altered without your knowledge.
6. To prevent unauthorized access, it is recommended to protect your user codes and master code.
7. Dispose of used batteries in accordance with local laws and regulations to avoid environmental hazards.



CAUTION:

1. Keep the lock away from children to prevent any accidents.
2. Do not use any cleaning agents that contain corrosive chemicals to clean the lock. Use a soft cloth and mild detergent instead.
3. Do not attempt to disassemble or modify the lock in any way. Contact the manufacturer for any repairs or maintenance.
4. In case of emergency, use a backup mechanical key to unlock.



Note: different door types have different accessories, please check whether they match before starting the installation.

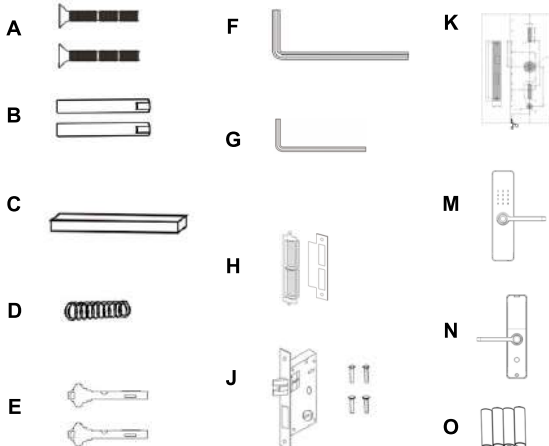
2.

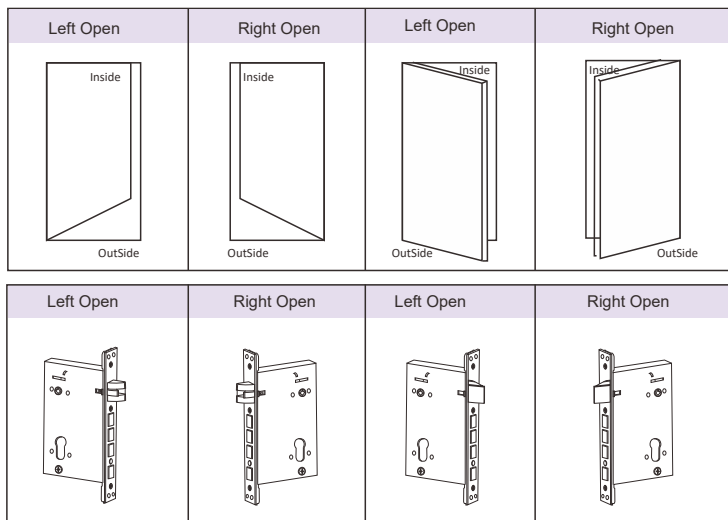
Pre-installation tools

You will need:

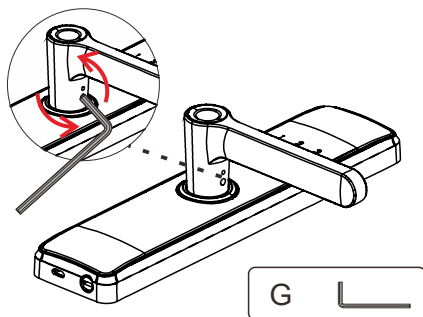
- Phillips screwdriver (You can use either a manual or electric screwdriver, but avoid using a power drill.)
- Measuring Tape
- Pencil
- Level

PART	DESCRIPTION	QTY
A	Connection Assembly Screws	2
B	Connection Column	2
C	Square Steel	1
D	Spring	2
E	Mechanical Keys	2
F	Hex Wrenches A	1
G	Hex Wrenches B	1
H	Strick Plate	1
J	Lock Body + 4 Screws	1
K	Drilling Template	1
M	Front Lock Panel	1
N	Back Lock Panel	1
O	Batteries	4



DOOR & LOCK DIRECTION

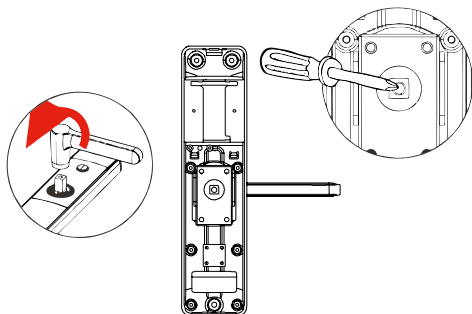
*The picture is only for reference, please make the object as the standard.

LOCK PREPARATION**Lever Direction Adjustment****Front Panel:**

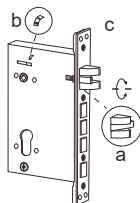
- Use (G)Hex Wrenches B to remove the screw on the handle of the front lock body.
- Switch the lever direction and fasten the screw.

Back Panel:

- Use the screwdriver to take out the screw in the handle of the back lock body.
- Pull out the handle to adjust the direction.
- To secure the adjustment, insert the handle and tighten the screw.



Change The Orientation Of The Latch Bolt



a. Choose the installation direction of the latch bolt of the lock by following the door opening direction.

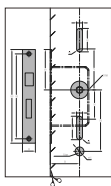
b. Locate the reversing block on the lock and push it up to release the latch bolt. The latch bolt will pop out automatically.

c. Turn the latch bolt 180 degrees to face the right direction and push it back in until it clicks.

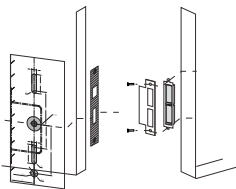
4. Installation

1 Installing the Lock Body

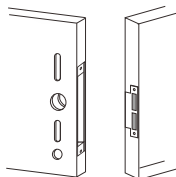
1. Cut the drilling template along the dotted lines as indicated on the template.

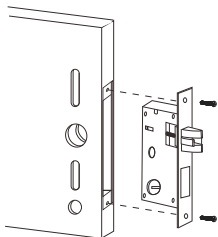


2. Position the template on your desired location on the door in accordance with the illustration provided.



3. To drill the necessary holes, use the drilling template to mark the appropriate location on the door, and then proceed to drill the holes at the marked positions.





4. After marking the holes on the door, insert the lock body into the hole carefully.

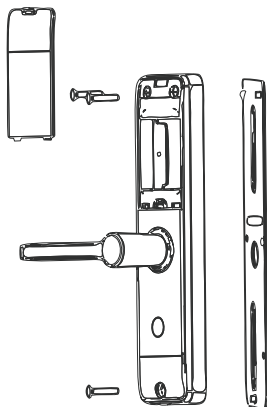
5. Tighten the two screws using a screwdriver to ensure the lock body is firmly secured to the door.

6. Insert the square steel into the corresponding hole in the lock body.

2

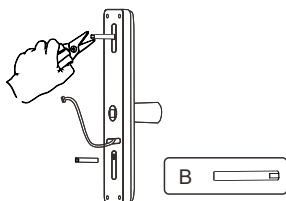
Take off the Mounting Plate

The first step in installing this smart lock is to remove the mounting plate from the back lock panel by using a screwdriver. This will expose the inner mechanism of the lock.



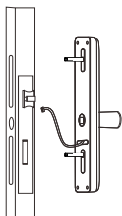
3

Screw the Connection Column



- Screw the (B)Connection Column onto the front lock panel. Ensure the round side of the connection column faces the panel.
- Use a vice to reinforce the column.
- This connection column will be used to attach the front lock panel to the door.

4 Position the Front Lock Panel

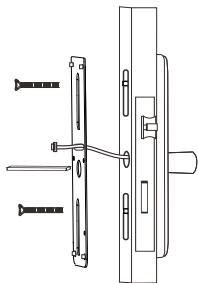


- Place the front lock panel onto the door, ensuring that the connection column goes through the corresponding holes in the door.
- Use a measuring tape and pencil to ensure that the lock is leveled and centered on the door.



When attaching the front lock panel to the door ensure the square steel hole gap of the front panel faces the side of the lever.

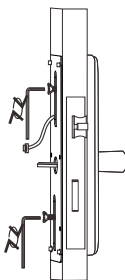
5 Fasten the Mounting Plate



- Insert the (C)Square steel with the corresponding hole.
- Make sure the wiring line and (C)Square steel are centered in the corresponding holes of the mounting plate.



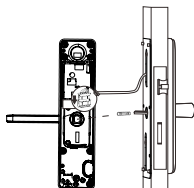
6 Position the Front Lock Panel



- To fasten the mounting plate onto the door, use (F)Hex Wrenches A to tighten the (A)Connection Assembly Screws.
- Please be mindful not to fasten too tightly, as it may potentially cause damage to the door.
- Ensure that the wiring line and the (C)Square Steel are accurately centered within their respective mounting plate holes.



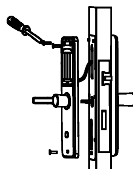
7 Connect the Wiring Line



- Please ensure that you handle the wiring line with care while making the connection. Once the connection is made, gently guide any excess length of the line into the door.
- Put (D)Spring into the square steel hole of the back panel

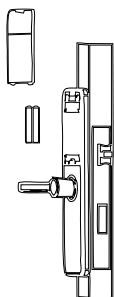


8 Fasten the Back Lock Panel

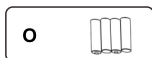


- Place the (N)Back Lock Panel onto the door, ensuring that the (C)Square Steel goes through the corresponding holes in the door.
- Use a screwdriver to fasten the back lock panel on the door.
- Before tightening the screws, make sure the lock is installed vertically.

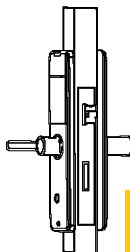
9 Insert Batteries



- To insert the batteries, remove the battery cover and place the (O) Batteries inside.



10 Testing



- Kindly perform a comprehensive test on all the unlock and lock functions



It's important to ensure that there's someone inside the house while testing the lock.

5. Programming

1 Factory Reset

Method 1

Take out one battery first, and wait for 8s
Use the thin thing to hold the little circle button on near the batteries
Put the battery in (Remember keep holding the button), and you will hear the sounds of 'di' Waiting the voice prompt that let you confirm the factory reset
Press the '#' to confirm the factory reset

Method 2

Access into the System setting
Press 3(System Setting), 7(Factory Reset) again, and press '#' to confirm the factory reset

(Please notice: After the factory reset, the lock will be under the experiencing mode: any fingerprint/IC card is able to unlock)

2 Operating Instructions

1.User Manage

- Touch any key to wake the system, and press '*' + '#' to enter the Setting, by using the initial admin password(123456)
- Press '1'(User Manage) to Create User
 - 1)Enroll Password: Enter the new password
 - 2)Enroll IC Card: Bring the card close to the sensing area of the keypad
 - 3)Enroll Fingerprint: Follow the voice prompt to press and lift your finger

- 1.Add Users
- 2.Delete Users
- 3.System Setting
- 4.Record Query

1. Add Admins

1. Add Fingerprint
2. Add Card
3. Add Password

2.Delete Users

- 1.Add Users
- 2.Delete Users
- 3.System Setting
- 4.Record Query

1. Delete My Group
2. Delete My Index

1. Delete Fingerprint
2. Delete Card
3. Delete Password

1)Delete Group

Delete by the group of user types: Fingerprints, cards, or passwords

2)Delete Index

Delete by entering the user number

- **Administrator Privilege:** The first user must be set up as the administrator.
- **Restricted Access:** Normal users are prohibited from accessing the settings menu.
- **User Authentication:** Only authorized users can register their fingerprint, password, or IC card. If an unauthorized user attempts to unlock the door, a security alarm will be triggered, and a picture will be captured and sent to the app. Other app users can respond to the emergency situation as needed.

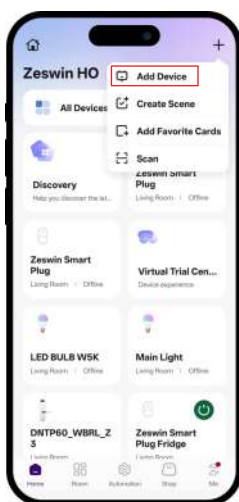
6. Install & Set up

DOWNLOAD THE APP

Search for Zeswin - Smart Living App in Apple's App Store and other major app stores or scan the following QR code to download the Zeswin - Smart Living App.



Open the Zeswin - Smart Living App, and tap on the plus icon to add the lock.



Tap on Add Device.

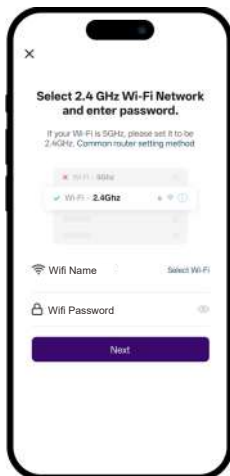


Tap on your lock.



Turn on Wifi and connect it.

Make sure the device only support 2.4GHz WiFi.



Network Configuration

- Press '3' to enter the System Setting
- Press '5' to create network configuration, and choose intelligent network connection

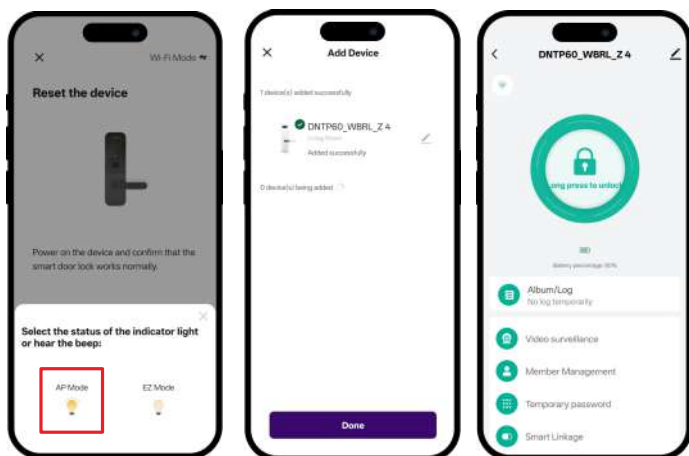


APP Operating

Confirm the indicator is blinking rapidly (Some models don't blink).

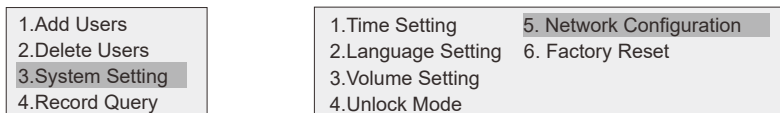
Select AP Mode then it will automatically start to connect.

You may rename the lock name by choosing the pattern of the pen.



If you have more questions about operating, please find the followed website of zeswin.com.

System Setting



- 1) Time Setting
- 2) Language Setting
- 3) Volume Setting
- 4) Unlock Mode 1.Single Open Mode
 2.Double Open Mode
- Disable Verify- Disable the certain unlocking functions among fingerprints, face ID, ID card, password.
- 5) Network configuration
- 6) Anti-prying setting 1.open
 2.close
- Anti-pry : Turn on or off the anti-pry alarm. The anti-pry alarm will sound for 30s if criminals remove the lock.

Record Query

To see the unlocking records

Further Information

- The initial admin password is: 123456. This password will be invalid after creating the user.
- "*" is the return or cancel button, and "#" confirms the button
- Press "*" + "#" to enter the settings.
- Consecutive incorrect passwords, face ID, fingerprint, IC card for up to 5 times will cause the system to be locked for 180 seconds.
- Password Protection Function: A user can prevent PIN code exposure from strangers by entering random digits before or after the PIN code.
- More than 30 seconds without operation in the system will automatically exit.
- The low-battery alarm will automatically appear, when the voltage is lower than 4.8V.
- Please ensure your mechanical keys are easily accessible to you, in case of emergencies.
(We are not responsible for any damages under that situation.)

84564	<u>123456</u>	569845
	Password	
	Random Number	

7. Passenger Mode :

- After unlock, press '0' and hold for 5s to enable the passenger mode
- Unlock again to disable the passenger mode