



Thank you for choosing our Smart Lock. This manual provides guidance on how to install and use the lock, and includes important safety and precautionary measures. Please read this manual carefully before using the product to ensure proper operation and maximum safety.

1. Safety and Precautions:

1. Read all instructions in their entirety to ensure that you have a complete understanding of the lock's features, installation requirements, and operation procedures.
2. We highly recommend seeking the assistance of a professional installer to ensure proper installation.
3. Before installation, please ensure that the lock and lock body are selected correctly according to the door opening direction. Failure to do so may result in improper function or damage to the lock.
4. Familiarize yourself with all warning and caution statements provided in this manual, as they are designed to protect you and others from harm or injury.
5. It is important to remind all family members of the safety precautions associated with using the lock, including keeping access to the back panel restricted and regularly checking the lock's settings to ensure they have not been altered without your knowledge.
6. To prevent unauthorized access, it is recommended to protect your user codes and master code.
7. Dispose of used batteries in accordance with local laws and regulations to avoid environmental hazards.



CAUTION:

1. Keep the lock away from children to prevent any accidents.
2. Do not use any cleaning agents that contain corrosive chemicals to clean the lock. Use a soft cloth and mild detergent instead.
3. Do not attempt to disassemble or modify the lock in any way. Contact the manufacturer for any repairs or maintenance.
4. In case of emergency, use a backup mechanical key to unlock



Note: different door types have different accessories, please check whether they match before starting the installation.

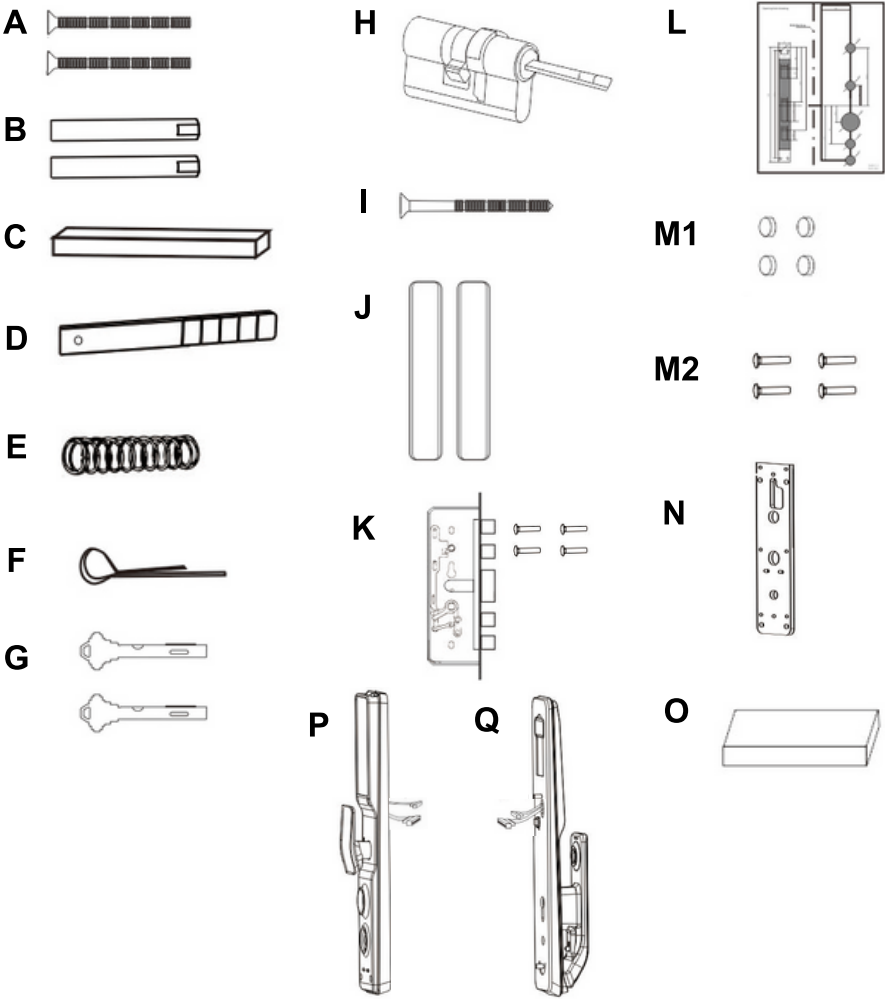
2. Pre-installation Tools:

You will need:

- Phillips screwdriver (You can use either a manual or electric screwdriver, but avoid using a power drill.)
- Measuring Tape
- Pencil
- Level

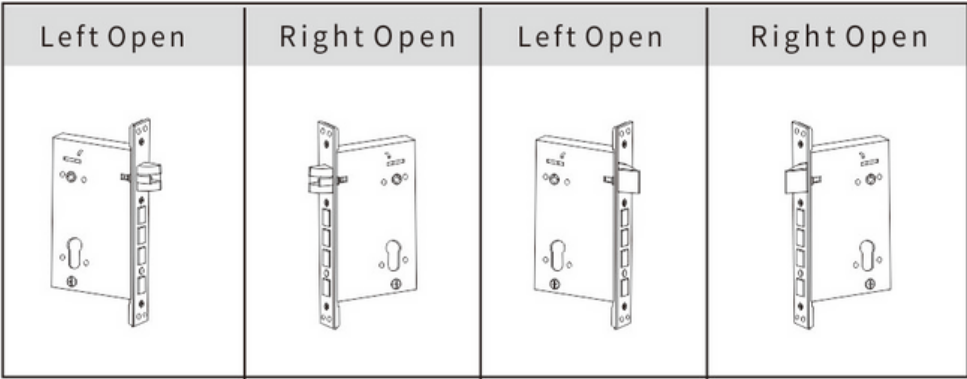
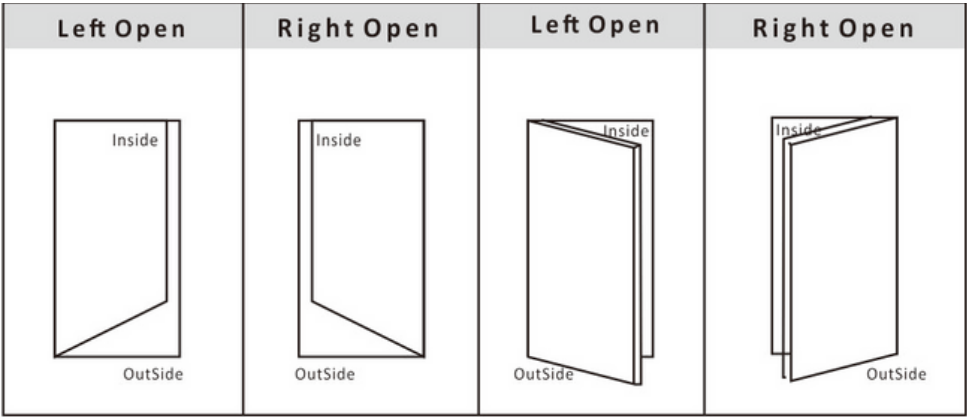
PACKAGE CONTENTS LIST

PART	DESCRIPTION	QTY
A	Connection Assembly Screws	2
B	Connection Column	2
C	Square Steel	1
D	Spindle	1
E	Spring	1
F	Pin	1
G	Mechanical Keys	2
H	Key Cylinder	1
I	Cylinder Assembly Screw	1
J	Rubber Pads	2
K	Lock Body + 4 Screws	1
L	Drilling Template	1
M1	Rubber Mat	4
M2	Back Assembly Screws	4
N	Back Sealing Panel	1
O	Battery	1
P	Back Lock Panel	1
Q	Front Lock Panel	1



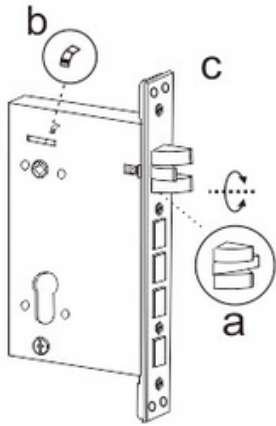
3. Door Preparation:

DOOR & LOCK DIRECTION



LOCK PREPARATION

Change the orientation of the latch bolt



a. Choose the installation direction of the latch bolt of the lock by following the door opening direction.

b. Locate the reversing block on the lock and push it up to release the latch bolt. The latch bolt will pop out automatically.

c. Turn the latch bolt 180 degrees to face the right direction and push it back in until it clicks.

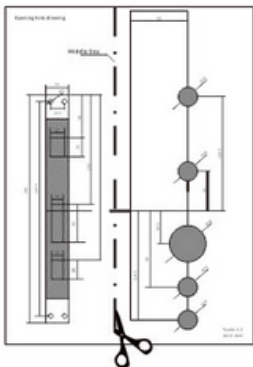
4.

Installation:

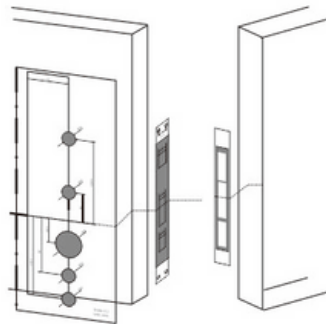
1

Installing the lock body

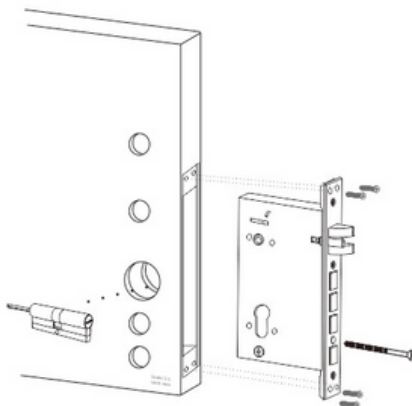
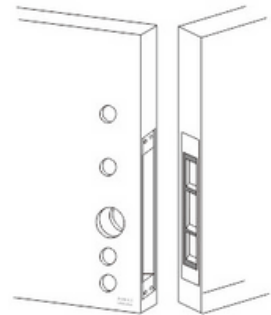
1. Cut the drilling template along the dotted lines as indicated on the template.



2. Position the template on your desired location on the door in accordance with the illustration provided.



3. To drill the necessary holes, use the drilling template to mark the appropriate location on the door, and then proceed to drill the holes at the marked positions.



4. After marking the mortise on the door, insert the lock body into the mortise carefully.

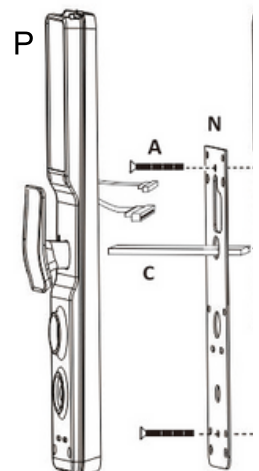
5. Tighten the four screws using a screwdriver to ensure the lock body is firmly secured to the door.

6. Insert the key cylinder into the lock body and use the cylinder assembly screw to firmly attach it in place.

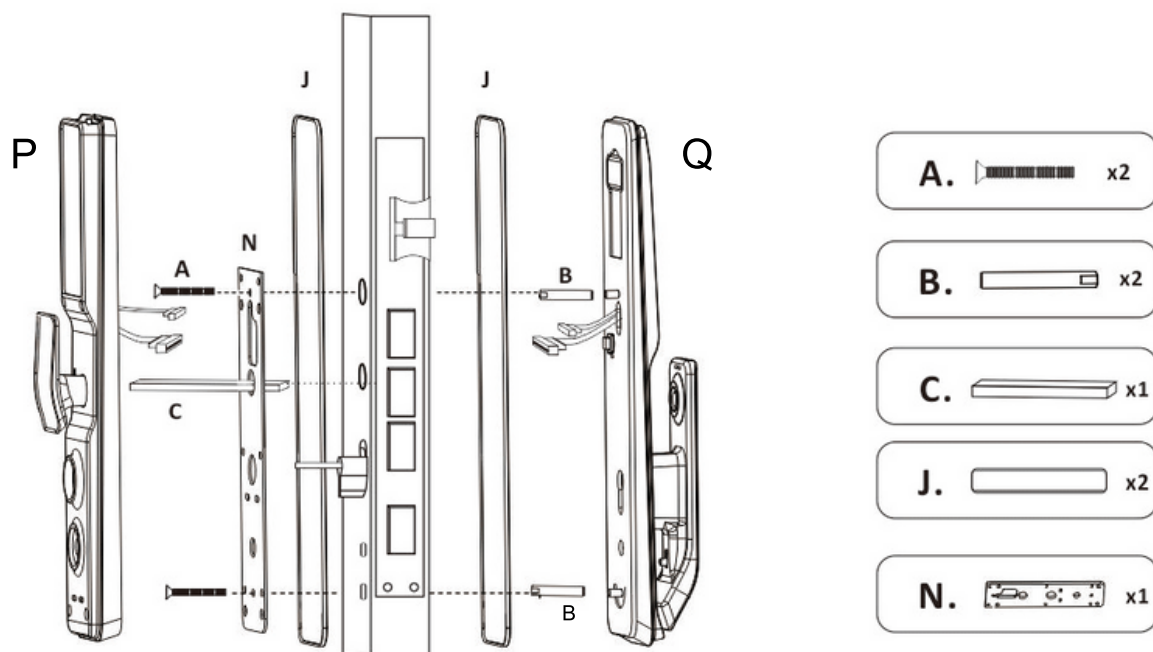
2

Take off the Back Sealing Panel

The first step in installing the facial recognition smart lock is to remove the (N)back sealing panel on the (P)back lock panel using a screwdriver. This will expose the inner mechanism of the lock.



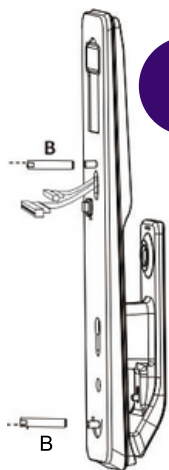
FRONT LOCK PANEL INSTALLATION



3

Screw the Connection Column

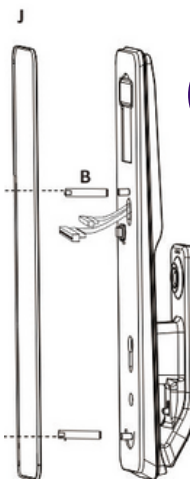
Screw the connection column (B) onto the front lock panel using a screwdriver. This connection column will be used to attach the front lock panel to the door.



4

Attach the Rubber Pad

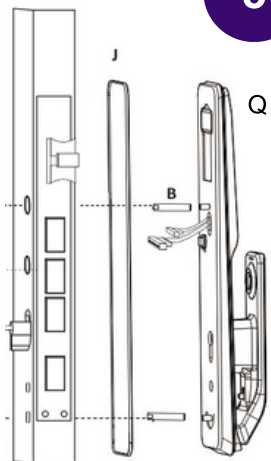
Attach the rubber pad (J) to the back of the (Q) front lock panel and the other side of the door, before the (N) back sealing panel. This will help to protect the door from damage and provide a secure fit for the lock.



5

Position the Front Lock Panel

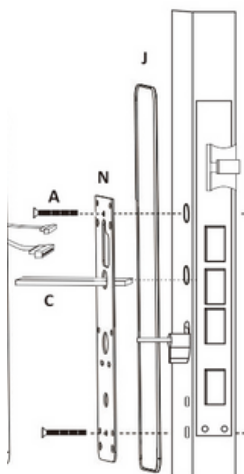
Place the (Q) front lock panel onto the door, ensuring that the connection column and connection lines (B) go through the corresponding holes in the door as shown in the illustration. Use a measuring tape and pencil to ensure that the lock is level and centered on the door.



6

Secure the Front Lock Panel

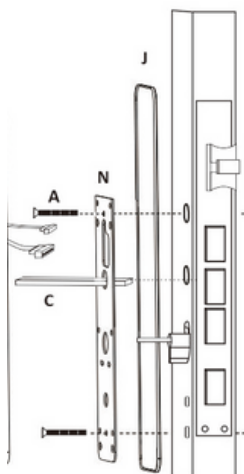
Push the (Q) front lock panel tightly onto the door and attach the (N) back sealing panel to the other side of the door. Use screws (A) to fasten the connection assembly screws and secure the (Q) front lock panel onto the door.



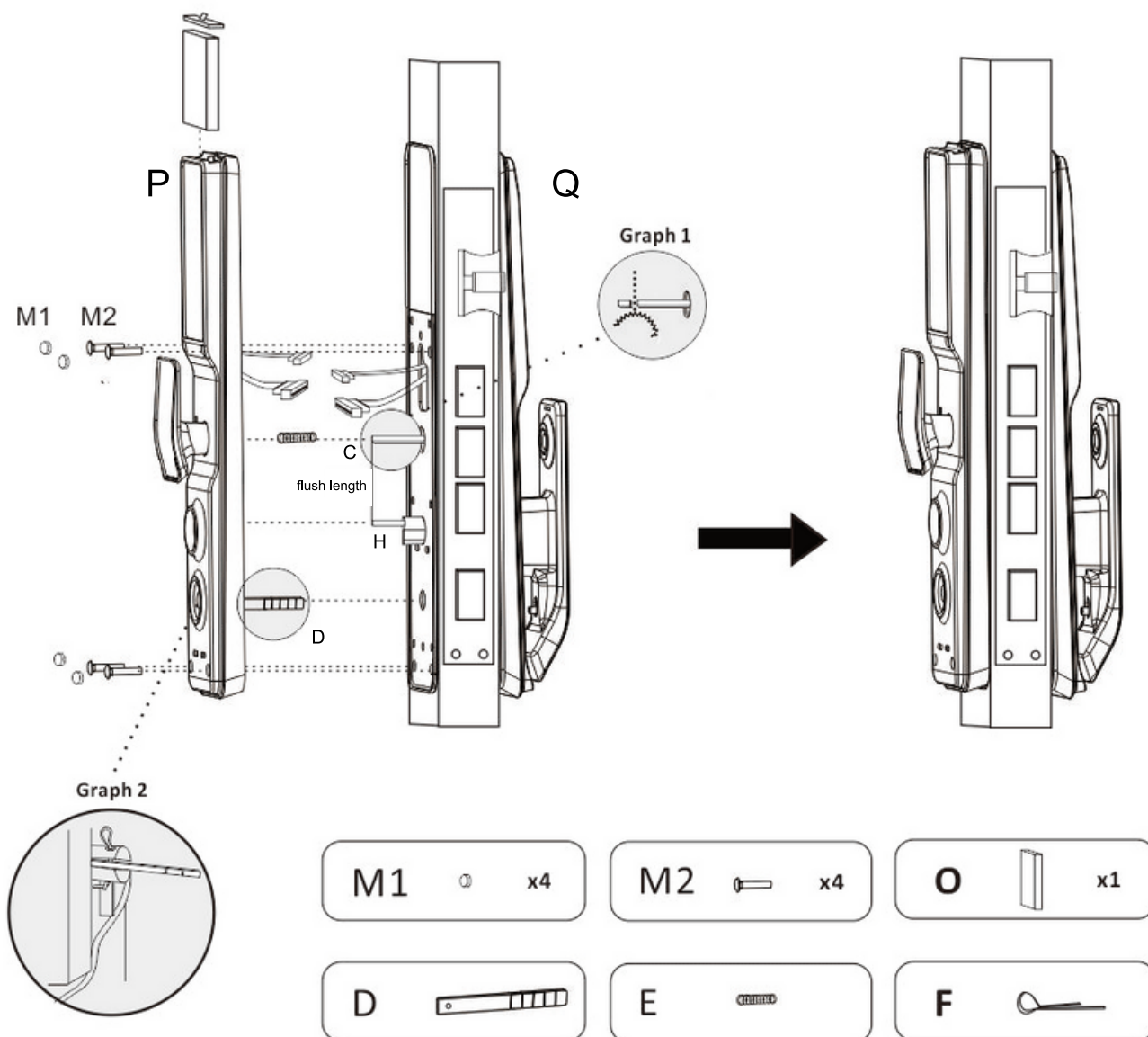
7

Insert the Square Steel

Insert the square steel (C) into the square steel hole on the back of the lock mechanism. This will provide the locking mechanism for the facial recognition smart lock.



LOCK BODY INSTALLATION



8

Cut the Square Steel and Key Cylinder

Using a cutting machine, cut the (C)square steel and (H)key cylinder to the proper length based on the thickness of your door as shown in graph 1. Ensure that the lengths are flush and smooth to ensure a secure fit.

9

Break the Spindle

If the (D)spindle is too long, use a vice to break it to the proper length depending on your door thickness.

Fasten the Spindle

Take out the (D)spindle and use the (F)pin to fasten by going through the holes for linking them together as graph 2 shown.

10

Insert the Spring

Insert the (E)spring into the square steel hole on the back lock panel. This will provide tension to the lock mechanism.

12

Align the Square Steel, Key Cylinder, and Spindle

Ensure that the square steel, key cylinder, and spindle are aligned and centered in the holes of the door.

11

Connect the Connection Lines

Connect the connection wires of the front and back lock panel together. Ensure that the lines are firmly connected and secure. Push and hide the connection wires into the door, ensuring that the lock panel can be tightly fixed to the door without any wires being visible.

13

Install the Back Lock Panel

Push the back lock panel into the door, ensuring that the square steel, key cylinder, and spindle are inserted into the back lock panel. Make sure the lock panel is tightly fixed to the door.

14

Secure the Back Lock Panel

Use four assembly screws (M2) to secure the back lock panel to the door. Follow up with four rubber mats (M1) to ensure a secure and tight fit.

15

Insert the Battery

Insert the battery (O) into the lock mechanism and fasten the battery cover. Make sure the lock mechanism is functioning properly.

5.

Programming:

PRE-INSTALLATION

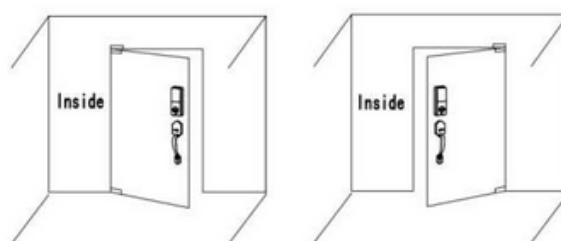
1

To access the pre-installation settings, press "888" followed by "#" and then press "1" to select your preferred door direction.

After selecting your door direction, please confirm it using the graph displayed. Then, choose the corresponding door direction in the system to ensure proper lock and unlock functionality. Failure to do so may result in the opposite effect, where unlocking may lock the door and vice versa.

Right Open

Left Open



Caution: If the pre-installation settings are incorrect, you may experience the opposite of intended results, where locking becomes unlocking and unlocking becomes locking.

OPERATING INSTRUCTIONS

2

User Manage

- To manage the system, please touch any key to activate it. To access the settings menu, please press the keys "*" followed by "#" and enter the initial admin password, which is "123456". To create a new user, press the number "1" to access the User Management option.

1. Setting up Face ID: To activate Face ID, position your face in accordance with the voice prompt to complete the setup process.

2. Creating a Password: To create a password, enter your desired password twice to verify and establish it.

3. Registering an IC Card: To register an IC card, place the card in close proximity to the keypad's sensing area two times to complete the registration process.

4. Fingerprint Setup: To set up your fingerprint, follow the instructions from the voice prompt and press your finger on the sensor five times to complete the setup process.

1. User Manage
2. Remote Manage
3. System Setting
4. System Query

1. Create User
2. Edit User
3. Delete User

1. Administrator
2. Normal User
3. Guest User
4. Coerce User

- **Administrator Privilege:** The first user must be set up as the administrator.
- **Restricted Access:** Normal users are prohibited from accessing the settings menu.
- **Guest User Setup:** To set the duration of a guest user account, access Edit User, enter the User Number (provided during user creation), press "3" to select the guest user, and set the effective date for the account. Press "#" to confirm or skip this step.

1. Create User
2. Edit User
3. Delete User

1. Disable User
2. Re-enroll
3. Guest Limit

- **User Authentication:** Only authorized users can register their fingerprint, password, or IC card. If an unauthorized user attempts to unlock the door, a security alarm will be triggered, and a picture will be captured and sent to the app. Other app users can respond to the emergency situation as needed.

3

Remote Management

- To manage the system, please touch any key to activate it. To access the settings menu, please press the keys "*" followed by "#" and enter the initial admin password, which is "123456". To create a new user, press the number "1" to access the User Management option.



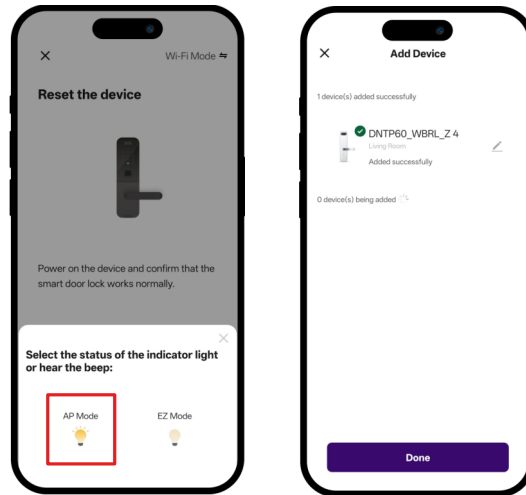
1. To download the Zeswin - Smart Living App, you may either search for it in the Apple App Store or the Playstore, or scan the QR code provided.
2. Once you have registered your account, kindly click on the button to add your device. From there, select "Camera & Lock" and choose the Lock (wifi) option based on the product you have purchased.
3. Please enter the WIFI SSID and password. Please note that the device only supports a 2.4GHz WIFI connection.
4. Press "2" to enter "Remote Manage"
5. Press "1" to create phone user, and select WIFI.

1. User Manage
2. Remote Manage
3. System Setting
4. System Query

1. Create Phone
2. Delete Phone
3. Create Remote
4. Delete Remote

1. WIFI
2. AP

- Please verify if the indicator is rapidly blinking (note that some models may not blink), if so, proceed to select the AP Mode.
- Once you initiate the process, the lock will automatically begin to connect. You have the option to rename the lock by selecting the pattern of the pen.
- To proceed, please use your device's camera to scan the QR code.



4

System Settings

- Single Verification - Only one unlocking function is accepted to gain access.
- Multiple Verification - A combination of two different unlocking functions is accepted to gain access.
- Disable Verification - Certain unlocking functions such as fingerprints, face ID, ID card, and password can be disabled.
- Anti-Pry - The anti-pry alarm can be turned on or off. If the lock is removed by any unauthorized person, the anti-pry alarm will sound for 30 seconds.

1. User Manage
2. Remote Manage
3. System Setting
4. System Query

1. Time Setting
2. Lang & Volume
3. Unlocking Setting
4. Lock Setting

1. Time Setting
2. Lang & Volume
3. Unlocking Setting
4. Lock Setting

1. Single Verif
2. Multiple Verif
3. Disable Verify
4. Anti-pry

Lock Settings

- Unlock Time - Refers to the time when the lock mechanism is released from the locked position.
- Auto Unlock - Refers to the time when the main lock mechanism is automatically released.
- Body Detect - You can choose between three distance options: "0" (Close), "1" (Short distance), or "2" (Long distance).
- Suspicious Setting - This feature has two options: "Capture" (which captures an image of anyone who stands in front of the door for about 10 seconds) and "Alarm" (which sounds an alarm if someone suspicious stands in front of the door for about 10 seconds).

1. Time Setting
2. Lang & Volume
3. Unlocking Setting
4. Lock Setting

1. Unlock Time
2. Auto Unlock
3. Body Detect
4. Strange Setting

1. Capture
2. Alarm

5

Factory Query

Method 1

- Press and hold the "open" and "close" buttons together after hearing the beeping sound 4 times.
- Press the "#" to confirm the factory reset.

1. User Manage
2. Remote Manage
3. System Setting
4. System Query

1. Record Manage
2. Storage Info
3. Version Info
4. Factory Reset

Method 2

- Access system settings
- Press 4 (System Query), 4(Factory Reset) again, and press "#" to confirm the factory reset.

- The initial admin password is: 123456. This password will be invalid after creating the user.
- "*" is the return or cancel button, and "#" confirms the button.
- Press "*" + "#" to enter the settings.
- Consecutive incorrect passwords, face ID, fingerprint, IC card for up to 5 times will cause the system to be locked for 60 seconds.
- Password Protection Function: A user can prevent PIN code exposure from strangers by entering random digits before or after the PIN code.
- More than 30 seconds without operation in the system will automatically exit.
- The low-battery alarm will automatically appear, when the voltage is lower than 4.8V,
- Please ensure your mechanical keys are easily accessible to you, in case of emergencies. (We are not responsible for any damages under that situation.)

84564 123456 564984
 Password
 Random Number

6.

Product Specifications:

Main Material	Aluminium Alloy
Color	Black/Gray
Fingerprint Quantity	100 Sets
Card Quantity	100 Sets
Power Type	5000mAh Li-battery
Recognition Time	<0.5s
Power Supply	7.4v
Working Temperature	-4~140°F
Code Length	6~12 digits
False Recognition Rate	<0.0004%
Certification	Fingerprint + Password + Key + Card + App + Face ID
Unlock Function	CE RoHS FCC
Product Dimension	2.953"Lx2.362"Wx15.946"H
Product Weight	5.225LB
Door Thickness	1.575"~4.724"
Length Door Fitting	Wooden/Security/Steel door