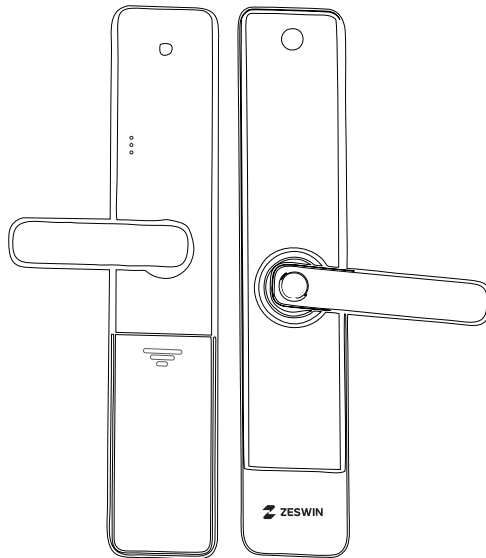


Smart Lock Touch - Instructions Manual



PLEASE KEEP THIS GUIDE

This guide contains important information about your lock.

1. Safety and Precautions:

1. Read all instructions in their entirety to ensure that you have a complete understanding of the lock's features, installation requirements, and operation procedures.
2. We highly recommend seeking the assistance of a professional installer to ensure proper installation.
3. Before installation, please ensure that the lock and lock body are selected correctly according to the door opening direction. Failure to do so may result in improper function or damage to the lock.
4. Familiarize yourself with all warning and caution statements provided in this manual, as they are designed to protect you and others from harm or injury.
5. It is important to remind all family members of the safety precautions associated with using the lock, including keeping access to the back panel restricted and regularly checking the lock's settings to ensure they have not been altered without your knowledge.
6. To prevent unauthorized access, it is recommended to protect your user codes and master code.
7. Dispose of used batteries in accordance with local laws and regulations to avoid environmental hazards.



CAUTION:

1. Keep the lock away from children to prevent any accidents.
2. Do not use any cleaning agents that contain corrosive chemicals to clean the lock. Use a soft cloth and mild detergent instead.
3. Do not attempt to disassemble or modify the lock in any way. Contact the manufacturer for any repairs or maintenance.
4. In case of emergency, use a backup mechanical key to unlock.



Note: different door types have different accessories, please check whether they match before starting the installation.

2. Pre-installation Tools:

You will need:

- Phillips screwdriver (You can use either a manual or electric screwdriver, but avoid using a power drill.)
- Measuring Tape
- Pencil
- Level

PART	DESCRIPTION	QTY
A	Connection Assembly Screws	2
B	Connection Column	2
C	Square Steel	1
D	Spring	1
E	Mechanical Keys	2
F	Spindle	1
G	Key Cylinder	1
H	Cylinder Screw	1
I	Mortise +4 Screws	1
J	Sleeve for Alarm Button	1
K	Pin	1
L	Drilling Template	1
M	Front Lock Panel	1
N	Back Lock Panel	1
O	Batteries	4
P	Lever Screw	1

A



B



C



D



E



F



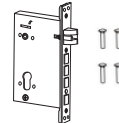
G



H



I



J



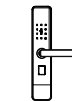
K



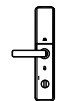
L



M



N



O



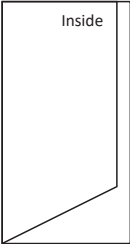
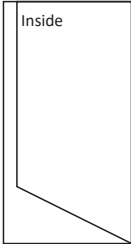
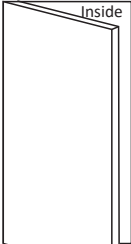

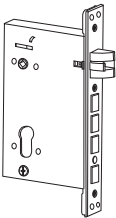
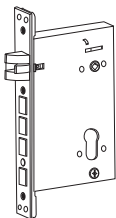
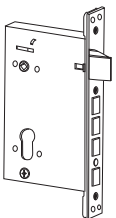
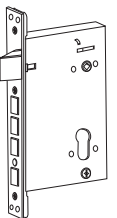
P



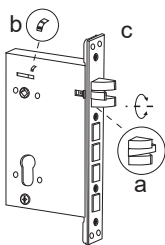
3.

Door Preparation:

DOOR & LOCK DIRECTION

LeftOpen	Right Open	LeftOpen	Right Open
			
LeftOpen	RightOpen	LeftOpen	RightOpen
			

Change The Orientation Of The Latch Bolt



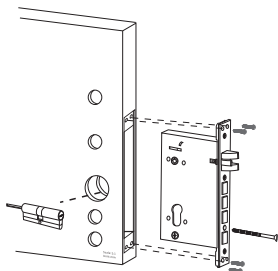
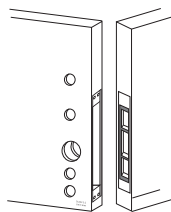
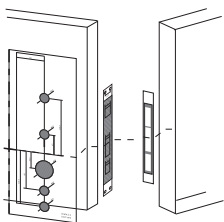
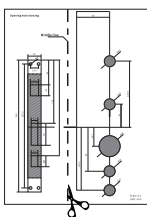
- Choose the installation direction of the latch bolt of the lock by following the door opening direction.
- Locate the reversing block on the lock and push it up to release the latch bolt. The latch bolt will pop out automatically.
- Turn the latch bolt 180 degrees to face the right direction and push it back in until it clicks.

1 Installing the Lock Body

1. Cut the drilling template along the dotted lines as indicated on the template.

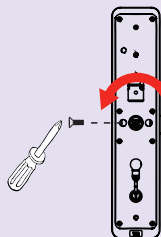
2. Position the template on your desired location on the door in accordance with the illustration provided.

3. To drill the necessary holes, use the drilling template to mark the appropriate location on the door, and then proceed to drill the holes at the marked positions.



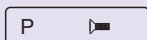
- After trepenning on the door, you may insert the lock body
- Tweaking the four screws to fasten the lock body
- Insert the key cylinder in the lock body, then use cylinder assembly screw to fasten it

Lever Direction Adjustment



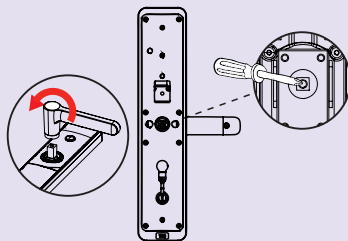
Front Panel:

- Adjust the lever direction depends on the door direction
- Use Phillips Screwdriver to fasten the (P) Lever Screw on the back of the front panel



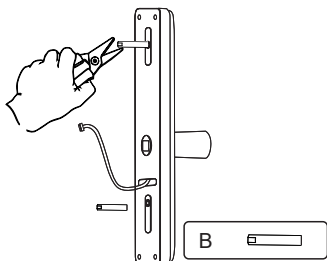
Back Panel:

- Take out the screw in the lever of the back lock panel
- Pull out the whole lever and adjust the direction, insert it back and screw it again



2 Screw the Connection Column

- Screw the (B)Connection Column onto the front lock panel. Ensure the round side of the connection column faces the panel.
- Use a vice to reinforce the column.
- This connection column will be used to attach the front lock panel to the door.

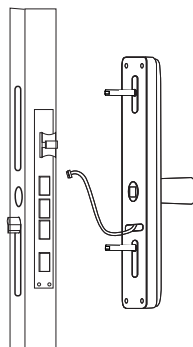


3 Position the Front Lock Panel

- Place the front lock panel onto the door, ensuring that the connection column goes through the corresponding holes in the door.
- Use a measuring tape and pencil to ensure that the lock is leveled and centered on the door.

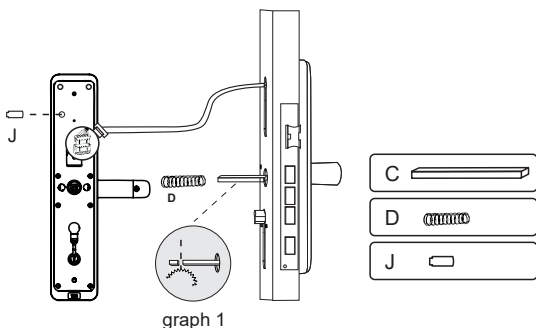


When attaching the front lock panel to the door ensure the square steel hole gap of the front panel faces the side of the lever.

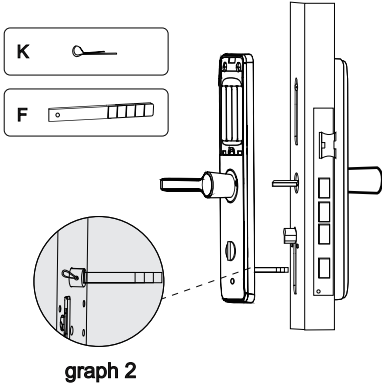


4 Connecting the two panels

- Cut the (C)Square Steel to the proper length as graph 1 shown
- Place the (D)Spring into the square steel hole, to prevent the square steel falling off
- Put (J)Sleeve on the alarm button
- Connect the wires tightly



5 Back Panel Installation



Break the Spindle

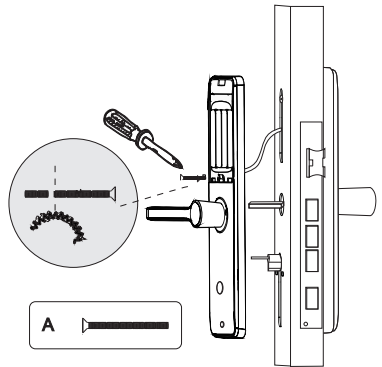
If the (D)Spindle is too long, use a vice to break it to the proper length depending on your door thickness. Fasten the Spindle. Take out the (D)Spindle and use the (F)Pin to fasten by going through the holes for linking them together as graph 2 shown.

Fasten the Spindle

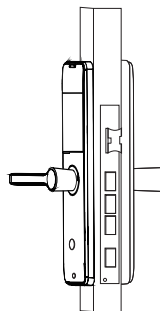
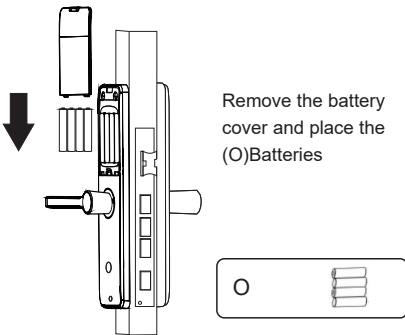
Ensure that the square steel, key cylinder, and spindle are aligned and centered in the holes of the door.

6 Install the Back Lock Panel

- Cut the (A)Column Screws to the proper length
- Push the back lock panel into the door, ensuring that the square steel and spindle are inserted into the back lock panel.
- Use Phillips Screwdriver to fasten the back lock panel on the door. Make sure the lock panel is tightly fixed.



7 Battery Inserting



- Kindly perform a comprehensive test on all the unlock and lock functions.



It's important to ensure that there's someone inside the house while testing the lock.

1 Factory Reset

Method 1

Take out one battery first, and wait for 8s

Use the thin thing to hold the little circle button on near the batteries

Put the battery in (Remember keep holding the button), and you will hear the sounds of 'di' Waiting the voice prompt that let you confirm the factory reset

Press the '#' to confirm the factory reset

Method 2

Access into the System setting

Press 3(System Setting), 7(Factory Reset) again, and press '#' to confirm the factory reset

(Please notice: After the factory reset, the lock will be under the experiencing mode: any fingerprint/IC card is able to unlock)

2 Operating Instructions

1.User Manage

- Touch any key to wake the system, and press '*' + '#' to enter the Setting, by using the initial admin password(123456)
- Press '1'(User Manage) to Create User

1)Enroll Password: Enter the new password

2)Enroll IC Card: Bring the card close to the sensing area of the keypad

3)Enroll Fingerprint: Follow the voice prompt to press and lift your finger

1.Add Users
2.Delete Users
3.System Setting
4.Record Query

1. Add Admins

1. Add Fingerprint
2. Add Card
3. Add Password

- The Normal User can't enter the Setting
- The first user has to be the administrator.

2.Delete Users

- 1.Add Users
- 2.Delete Users
- 3.System Setting
- 4.Record Query

1. Delete My Group
2. Delete My Index

1. Delete Fingerprint
2. Delete Card
3. Delete Password

1)Delete Group

Delete by the group of user types: Fingerprints, cards, or passwords

2)Delete Index

Delete by entering the user number

5.

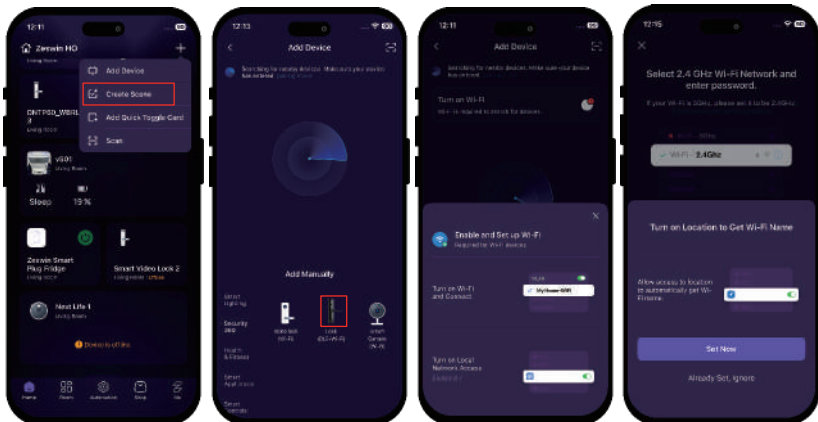
Programming:

DOWNLOAD THE APP

Search for Zeswin - Smart Living App in Apple's App Store and other major app stores or scan the following QR code to download the Zeswin - Smart Living App.

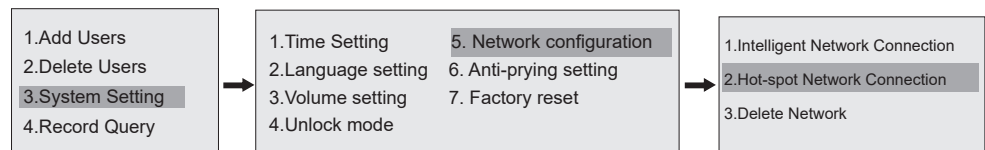


Please type in WiFi SSID and Key,(Remember the device only support 2.4GHz WiFi)



Networking Configuration

- Press '3' to enter the System Setting
- Press '5' to create phone user, and choose WIFI

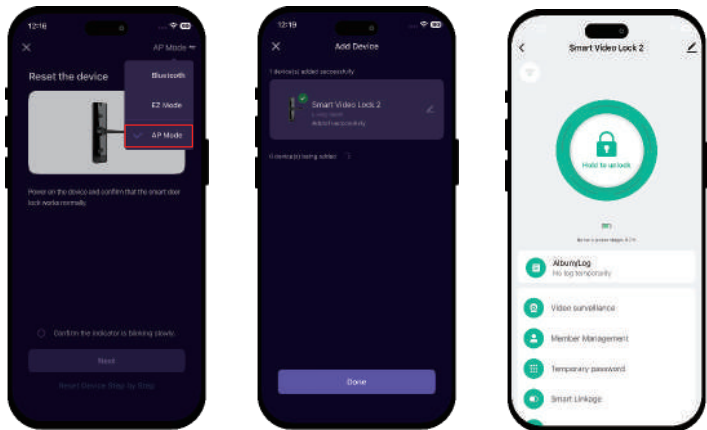


APP Operating

Confirm the indicator is blinking rapidly (Some models don't blink) Select AP Mode.

Then it will automatically start to connect.

You may rename the lock name by choosing the pattern of the pen.



Please put your phone to device camera scan your QR code
If you have more questions about operating, please find the followed website of zeswin.com.

3.System Setting

1.Add Users
2.Delete Users
3.System Setting
4.Record Query

1.Time Setting	5. Network configuration
2.Language setting	6. Anti-prying setting
3.Volume setting	7. Factory reset
4.Unlock mode	

- 1) Time Setting
- 2) Language Setting
- 3) Volume Setting
- 4) Unlock Mode
 - 1.Single Open Mode
 - 2.Double Open Mode
- Disable Verify- Disable the certain unlocking functions among fingerprints, face ID, ID card, password.
- 5) Network configuration
- 6) Anti-prying setting
 - 1.open
 - 2.close
- Anti-pry- Turn on or offthe anti-pryalarm.Theanti-pry alarm will sound for 30s if criminals remove the lock

4.Record Query

To see the unlocking records

Further Information

- 1) The initial admin password is 123456 and will be invalid after creating a user
- 2) ‘*’ is the return or cancel button, and ‘#’ confirms the button
- 3) Press ‘*’ + ‘#’ to enter the Setting
- 4) Consecutive incorrect password/face id/fingerprint/IC card five times, the system will be locked for the 60s without any response
- 5) Password Protect Function: user can prevent PIN code exposure from strangers by entering random digits before or after the PIN code

84564 123456 569845

Password

Random Number

- 6) More than 30s without operation in the Setting, will automatically exit
- 7) The low-battery alarm will be automatically played while the voltage is lower than 4.8V.
Less than 200 unlocking times left. Please remember to recharge the Li-battery
- 8) Please make sure your mechanical keys are hidden out of the house for emergency use.
We are not responsible for any damages under that situation.

6.

Product Specifications:

Power Supply	4.5V-6.5V (4pcs AA Alkaline)
Typical Statc Current	<55μA(Batery lifeeme can be lasang more than 1 year)
Working Current	<250 mAh
FRR	≤0.15%
FAR	≤0.0004%
Working Temperature	-20°C~60°C
RH	20%~93%